

Silver Salmon Creek, CCI-24



Silver Salmon Creek, View Northwest

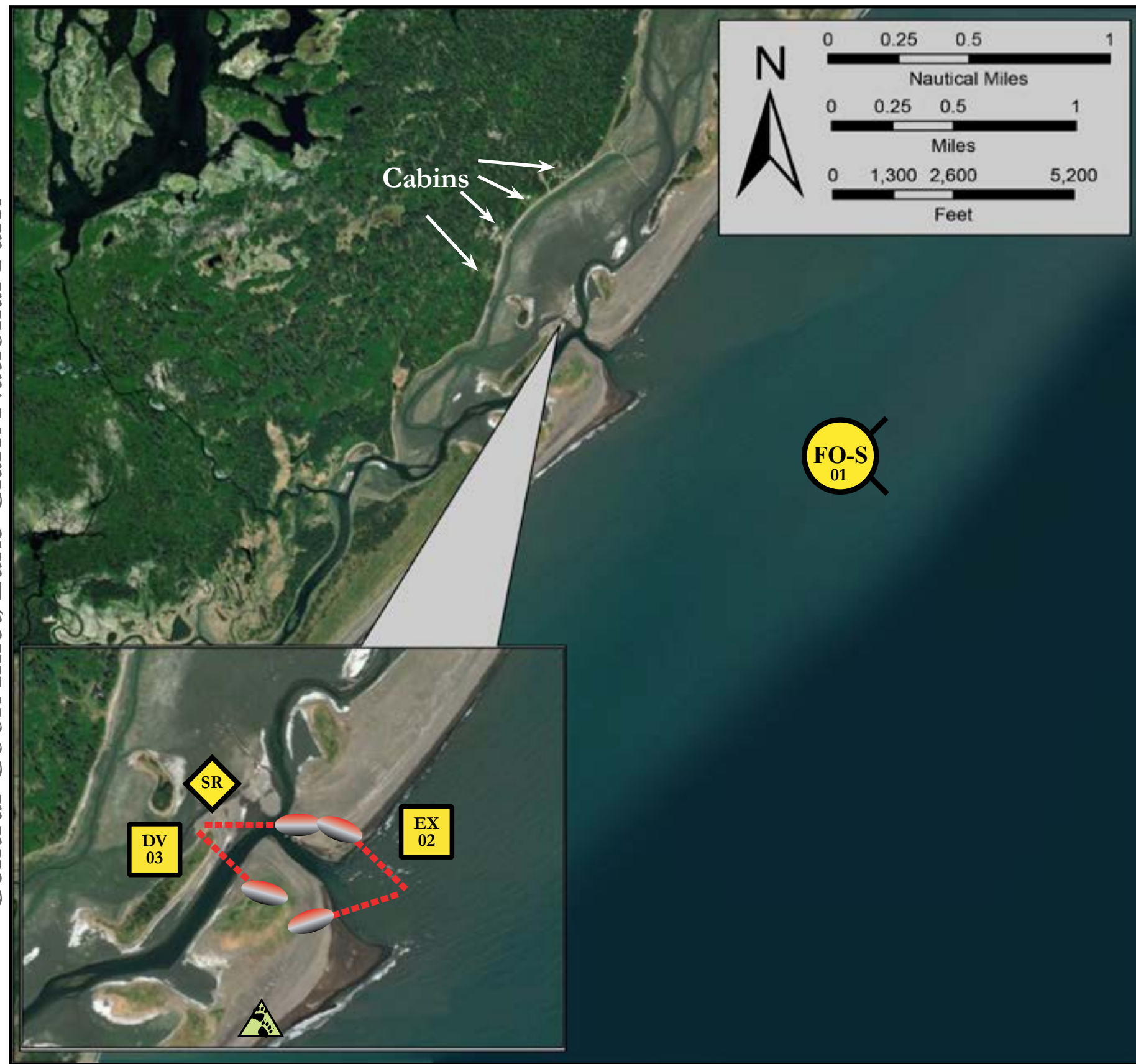
Map
& Photo
Legend



Silver Salmon Creek, View Northwest

DV	Diversion Booming		Bears in Area-Guards Needed
EX	Exclusion Booming		Shoreseal Boom
FO-S	Free-oil Skimming and Recovery, Shallow Water		Protected-water Boom
			Shoreside Recovery




Geographic Response Strategies for Central Cook Inlet/Lake Clark National Park



Map is not intended for navigational use.

Lat. 59° 59' 8.4" N
Lon. 152° 39' 14.5" W

Depths in Fathoms

ID	Location and Description	Response Strategy	Implementation	Response Resources	Staging Area	Site Access	Resources Protected (months)	Special Considerations
CCI-24-01 	Silver Salmon Creek and East Glacier Creek Nearshore waters in the general area of: Lat. 59° 53.08" N Lon. 152° 48.13" W	Free-oil Recovery Maximize free-oil recovery in the offshore & nearshore environment of Silver Salmon Creek depending on spill location and trajectory.	Deploy free-oil recovery strike teams upwind and up current of Silver Salmon Creek. Use aerial surveillance to locate incoming slicks.	Deploy multiple nearshore free-oil recovery strike teams as required to maximize interception of oil before it impacts sensitive areas.	Homer Harbor or Snug Harbor	Via marine waters See NOAA Charts 16661-1.	Same as CCI-24-02	Vessel master should have local knowledge. Use extreme caution, shoal waters with numerous reefs and rocks.
CCI-24-02 	Silver Salmon Creek Lat. 59° 53.18 N Lon. 152° 48.57 W	Exclusion Exclude oil from impacting the identified stream and intertidal area in Silver Salmon Creek.	Deploy anchors and boom with skiffs (class 6). Place a 100 ft. section of tidal seal boom on each shore and complete the exclusion with 2000 ft. of protected-water boom. Tend throughout the tide.	Deployment Equipment 1800 ft. protected-water boom 200 ft. tidal-seal boom 10 ea. small anchor systems 4 ea. anchor stakes Vessels 1 ea. class 3 1 ea. class 6 Personnel/Shift 5 ea. vessel crew 2 ea response techs Tending Vessels 1 ea. class 3 1 ea. class 6 Personnel/Shift 3 ea. vessel crew	Vessel platform	Via marine waters Chart 16661-1	Fish -intertidal spawning-salmon (May-Sept.) Birds -waterfowl concentration Marine mammals -seals Human use -commercial fishing, subsistence, high recreation use Habitat -marsh, gravel, sand beach	REPORT any cultural resources found during operations to the FOSC Historic Properties Specialist. Reporting should be performed as the circumstances of the emergency allow. The entrance to the creek changes yearly. Local bear viewing lodges may provide local knowledge and support for operations. Site surveyed: 9/12/10 Title 41 permitting required from ADNR. Evaluate oil movements, local conditions and river outflow to ensure deployment is necessary. Tested: not yet
CCI-24-03 	Silver Salmon Creek a. Lat. 59° 53.43 N Lon. 152° 48.61 W b. Lat. 59° 52.79 N Lon. 152° 54.87 W	Divert and Collect Divert oil to shore-side collection points determined by spill source and trajectory.	Deploy anchors and boom with skiffs (class 6). For Silver Salmon Creek place 200 ft. of tidal-seal on the collection beach complete with 1000 ft. of protected water boom at proper angle to divert incoming oil to the collection site. On array (b) at Glacier Creek place 100 ft. tidal- seal on the collection beach and complete with 800 ft. of protected-water boom. Set-up collection site using shore-side collection units or if oil volume is minimal, use sorbent boom or snare line to collect oil. Tend throughout the tide	Deployment Equipment 1800 ft. protected-water boom 200 ft. tidal-seal boom 10 ea. small anchor systems 8 ea. anchor stakes 1 ea. shore-side collection units Vessels/Personnel/Shift Same as CCI-24-02 Tending Vessels/Personnel/Shift Same as CCI-24-02	Vessel platform	Via marine waters Chart 16661-1	Same as CCI-24-02	Vessel master should have local knowledge. Take appropriate measures as outlined in STAR Manual to protect the beach at the collection site. During winter months formation of pan ice in the bays may occur during colder periods. In the event of ice conditions, focus on free-oil recovery. A large population of bears forage on the tidal flats in the spring/summer and during salmon runs. A bear guard is required during these periods. Title 41 permit may be required from ADNR. Tested: not yet