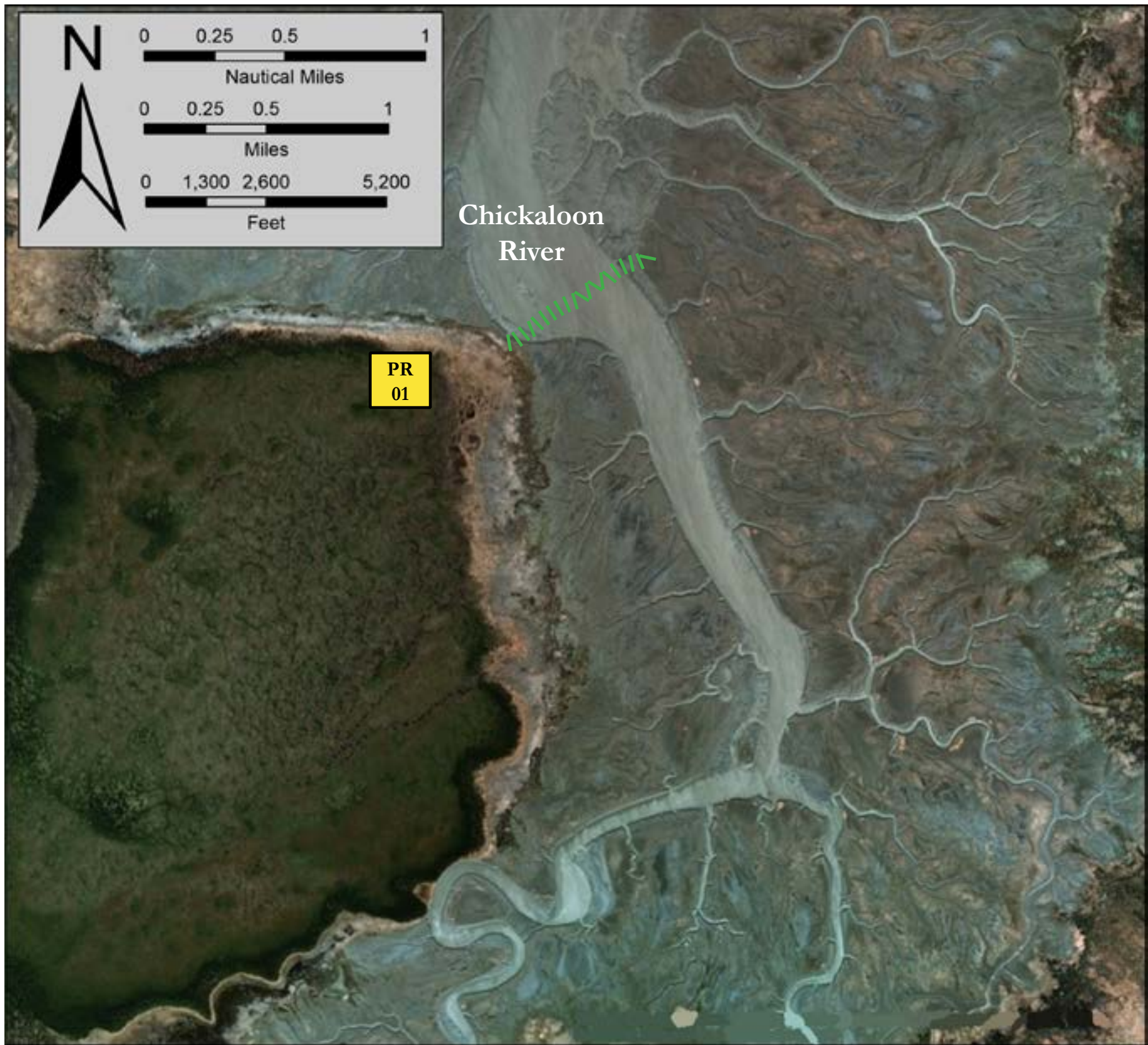


# Chickaloon River, NCI-17



Map is not intended for navigational use. Lat. 60° 53' 4.7" N Lon. 150° 0' 54.1" W Depths in Fathoms

## Geographic Response Strategies for Northern Cook Inlet Subarea



Location of NCI-17

Map & Photo Legend



Chickaloon River mouth, View Northwest

PR

Passive Recovery and Collection

|||||

Passive Collection (Snare Line)

ID	Location and Description	Response Strategy	Implementation	Response Resources	Staging Area	Site Access	Resources Protected (months)	Special Considerations
NCI-17-01 <div>PR</div>	<b>Chickaloon River</b>  Lat. 60° 54.15' N Lon. 150° 01.33' W	<b>Passive Recovery</b>  Use snare line or sorbent boom to recover oil prior to impacting the marsh and stream at the Chickaloon River.	Transport equipment by helicopter from Anchorage.  Use inflatable raft to deploy boom across Chickaloon River.  Replace as necessary to maximize recovery.	<b>Deployment Equipment</b> 4000 ft. snare line or sorbent boom 4 ea. anchor systems (~20 lbs.) 4 ea. anchor stakes  <b>Vessels</b> 1 ea. helicopter 1 ea. inflatable raft or john boat  <b>Personnel/Shift</b> 4 ea. response techs  <b>Tending Vessels</b> 1 ea. inflatable raft or john boat  <b>Personnel/Shift</b> 3 ea. response techs	Anchorage	Helicopter  Chart 16660-1	<b>Fish-</b> salmon  <b>Marine Mammals-</b> Beluga Whales  <b>Habitat-</b> exposed tidal flats, marsh  <b>Human use-</b> high recreational use, sport fishing, waterfowl hunting.  <b>Birds-</b> waterfowl nesting/concentration, shorebird nesting	Steep and soft mud banks present significant hazards to responders.  REPORT any cultural resources found during operations to the FOSC Historic Properties Specialist. Reporting should be performed as the circumstances of the emergency allow.  Title 41 permitting required from ADNR.  Use snare line for persistent oils and sorbent boom for non-persistent oils.  The site is a National Wildlife Refuge.  Site surveyed: 09/17/03 aerial survey. Tested: not yet