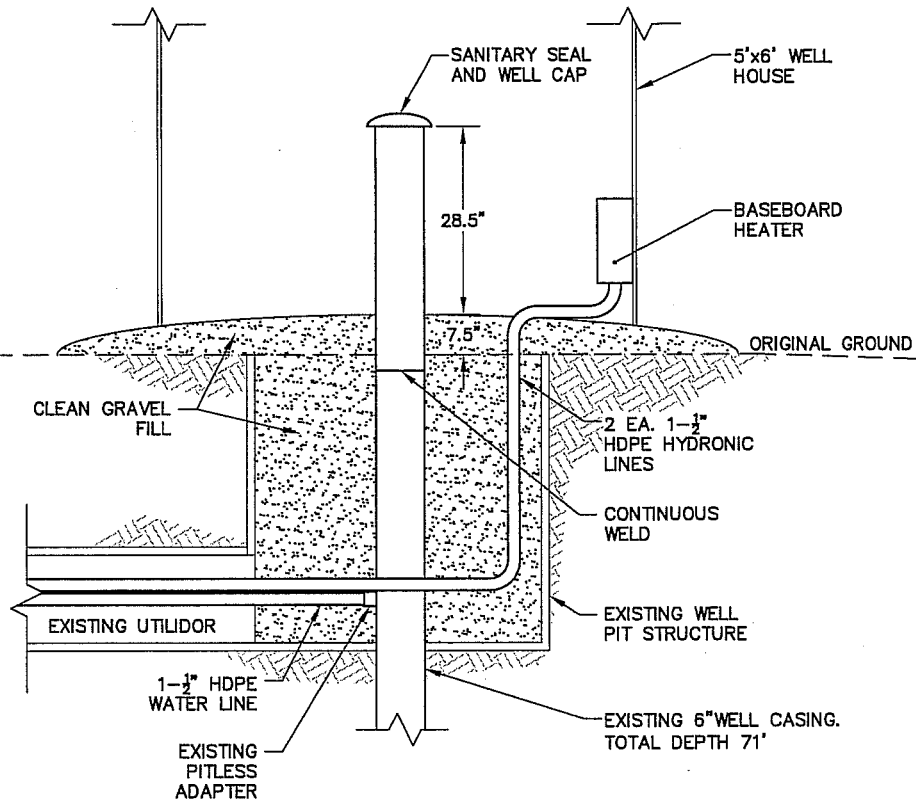


FILE NAME: J:\Jobsdata\9966 Beaver\CADD\Drawings\well_record.dwg.dwg



NOTES:

1. SEE FIGURE 1 FOR WELL LOCATION.
2. SEE MEMO DATED 8-18-06 FOR ADDITIONAL INFORMATION.
3. SEE 11-6-95 WELL LOG FOR SUBSURFACE INFORMATION.
4. WELL IMPROVMENTS PERFORMED IN JULY, 2006.



VILLAGE SAFE WATER



BEAVER, ALASKA

WELL IMPROVEMENTS

RECORD DRAWING

Project No: 9966

Drawn By: TKM

Scale: N.T.S.

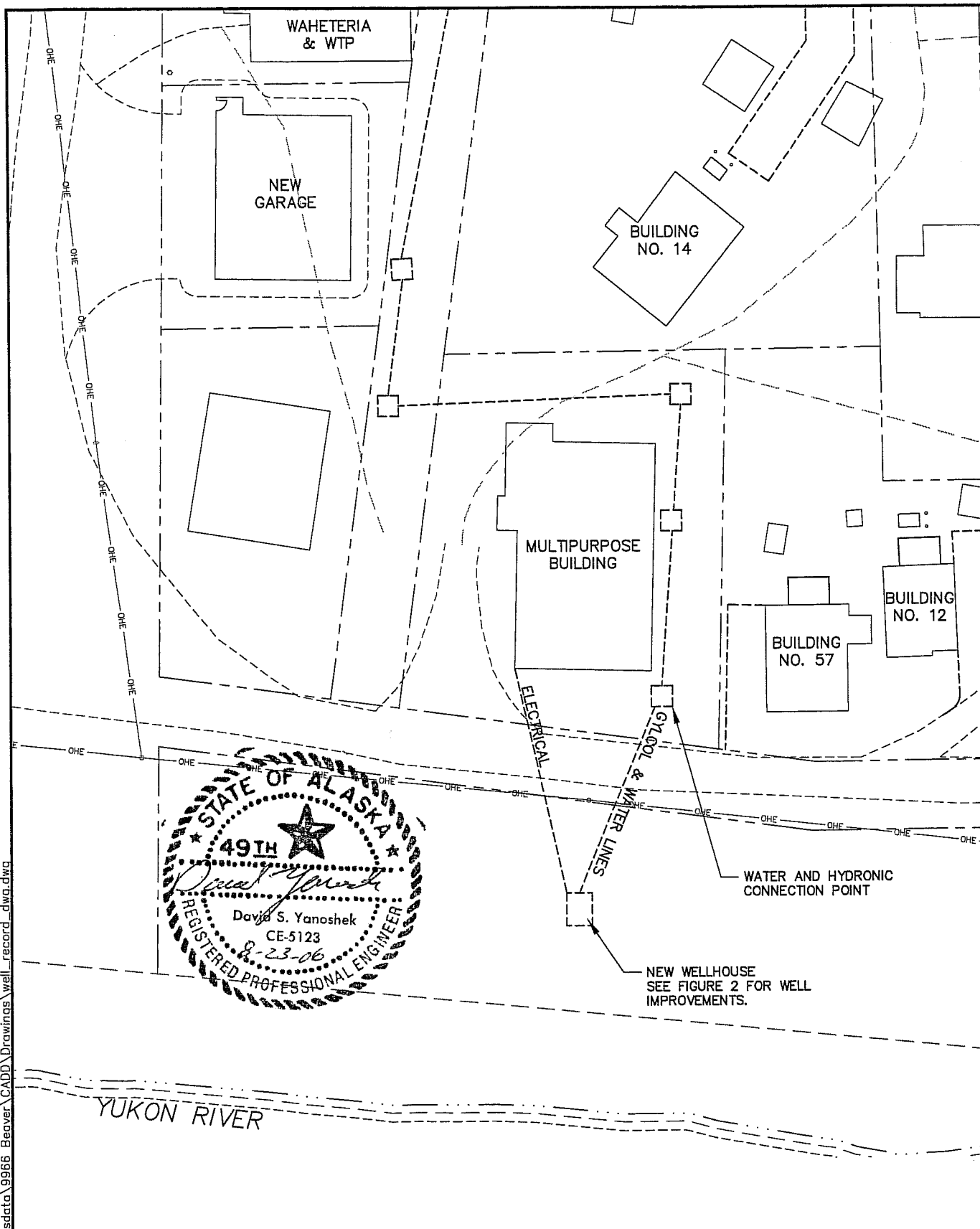
Date: 8/06

Figure: 2

Project:

PRELIM

FILE NAME: J:\Jobsdata\9966 Beaver\CADD\Drawings\well_record_dwg.dwg



CRW
ENGINEERING GROUP, LLC

Project:
PRELIM

VILLAGE SAFE WATER

BEAVER, ALASKA

NEW WELL HOUSE LOCATION

RECORD DRAWING

Project No:	9966
Drawn By:	TKM
Scale:	1"=40'
Date:	8/06
Figure:	1

21:11 FAX 907 457 8444

ICE WATER WELL

ICE WATER WELL, INC.

P.O. Box 10529
FAIRBANKS, ALASKA 99710
(907) 457-8444

WELL LOG

11-1-95 - 11-6-95

Well Owner Village of Beaver Date Started _____ Date Finished _____
Well Location 1st Ave RIVER PARK near Joe + Chuck Joe
Mailing Address BEAVER ALASKA RIS B.E. to 20-W
Size of Casing 6" Steel Depth of Hole 70' Cased To 60'
Static Water Level 28' Drawdown 4 inches Static of Well 10' SCREEN
Well Pump Test at 30 opm Gallons per minute for 36 hours
Formations Encountered:

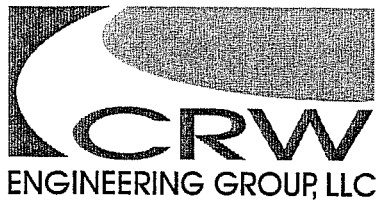
0	to	2	Stick up
2	to	6	Silt
6	to	30	GRAVEL "Dry"
30	to	70	GRAVEL and WATER
70	to	71	PERMA FROST GRAVEL
			NOTE: WELL CAPPED w/ 1/4 Plate
			Location Between OLD
			B.T.A well & 1976 Comm. WELL
			SEE MAP

Pump Installation:

Date Installed 11-6-95 Type "TEST" Size 1 1/2 HP

Material Used:

6" Drive Shoe
60' STEEL CASING 6" x .250 WALL
10' SCREEN ASSEMBLY KPACKER & BOTTOM



CRW Engineering Group, LLC

Memorandum

from: Dave Yanoshek, P.E.

to: Lee Johnson, P.E. ADEC

Date: August 18, 2006

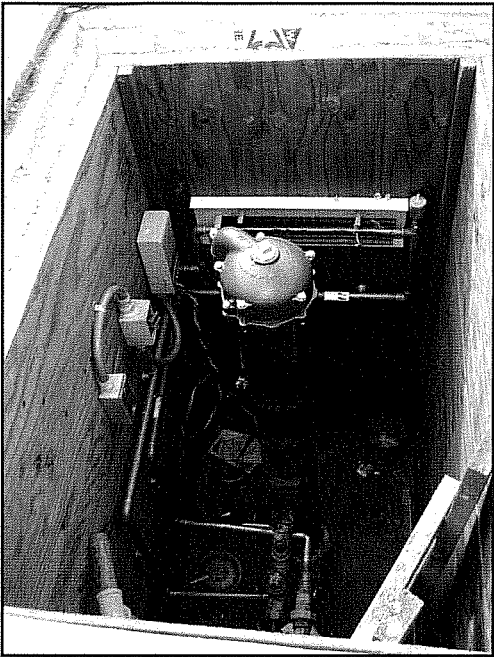
Regarding: Beaver Well Modifications, PWS # 360230

Modifications were made to the existing well in Beaver to raise the well cap above existing grade and fill in the well pit in June and July, 2006. Modifications include removing existing valves and fittings for the water line and heat lines from the well pit. Existing pipes were replaced back at the next junction box (located near the multipurpose building). The water line was tied directly into the pitless adaptor. Heat lines were run up, above ground level to a new fin tube heater. The former well pit was filled with clean gravel and a protective structure was constructed over the well. Sanitary seal and cap were installed. See attached photos.

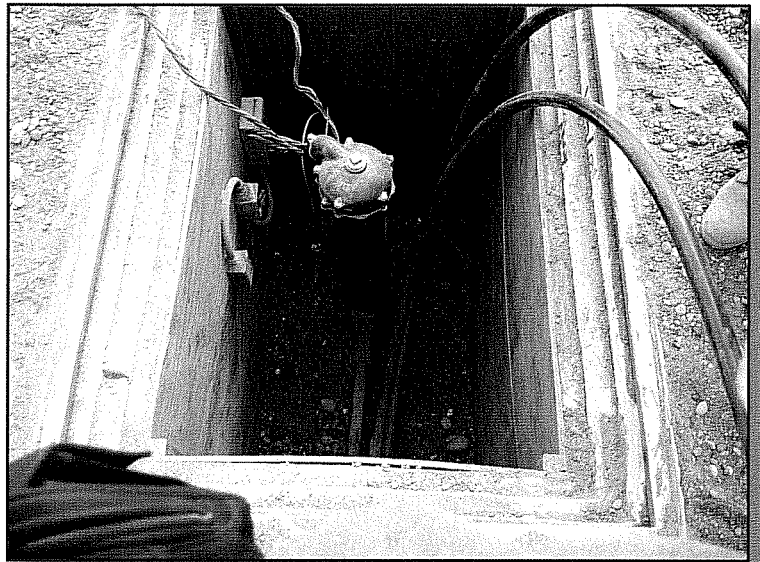
Submitted by David S. Yanoshek, P.E.



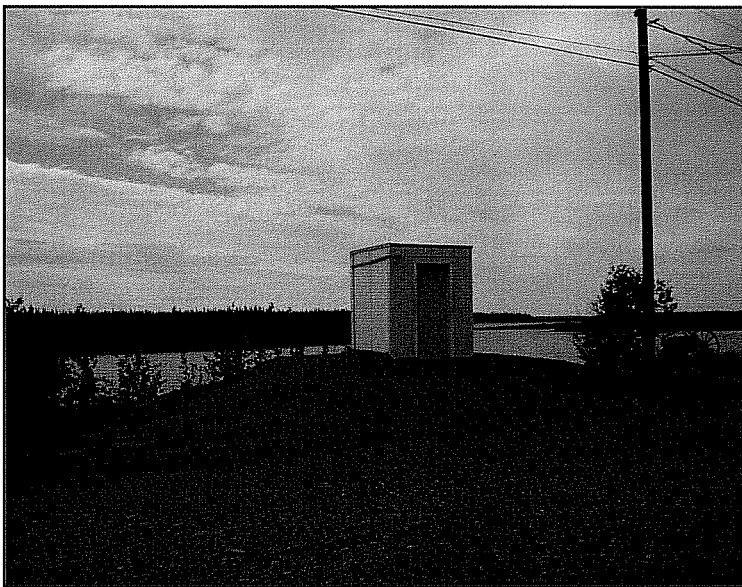
BEAVER WELL MODIFICATIONS 2006



Well pit before modifications



Well pit during modifications



Well house after modifications



Inside of well house after modifications