

NOTES:

1. WATER PIPE TO BE BURIED 3'
2. SEWER PIPE TO BE BURIED MIN. OF 3', 2% MIN. GRADE TO BE USED ON SEWER LINE
3. ALL HEAT TAPE TO BE SELF-LIMITING
4. CLEANOUTS TO COME TO SURFACE
5. LOCATION OF EXISTING MH IS APPROXIMATE

SCALE 1" = 20'

DATE	REVISIONS	INITIALS
7/2/84	AS BUILT	PCS

U. S. Department of Health & Human Services  
Public Health Service  
Indian Health Service

**TANANA, ALASKA**  
TANANA HOSPITAL TRAILERS WATER & SEWER SERVICE HOOK-UPS  
PUBLIC LAW 86-121 PROJECT  
PROJECT NO. AN-81-231

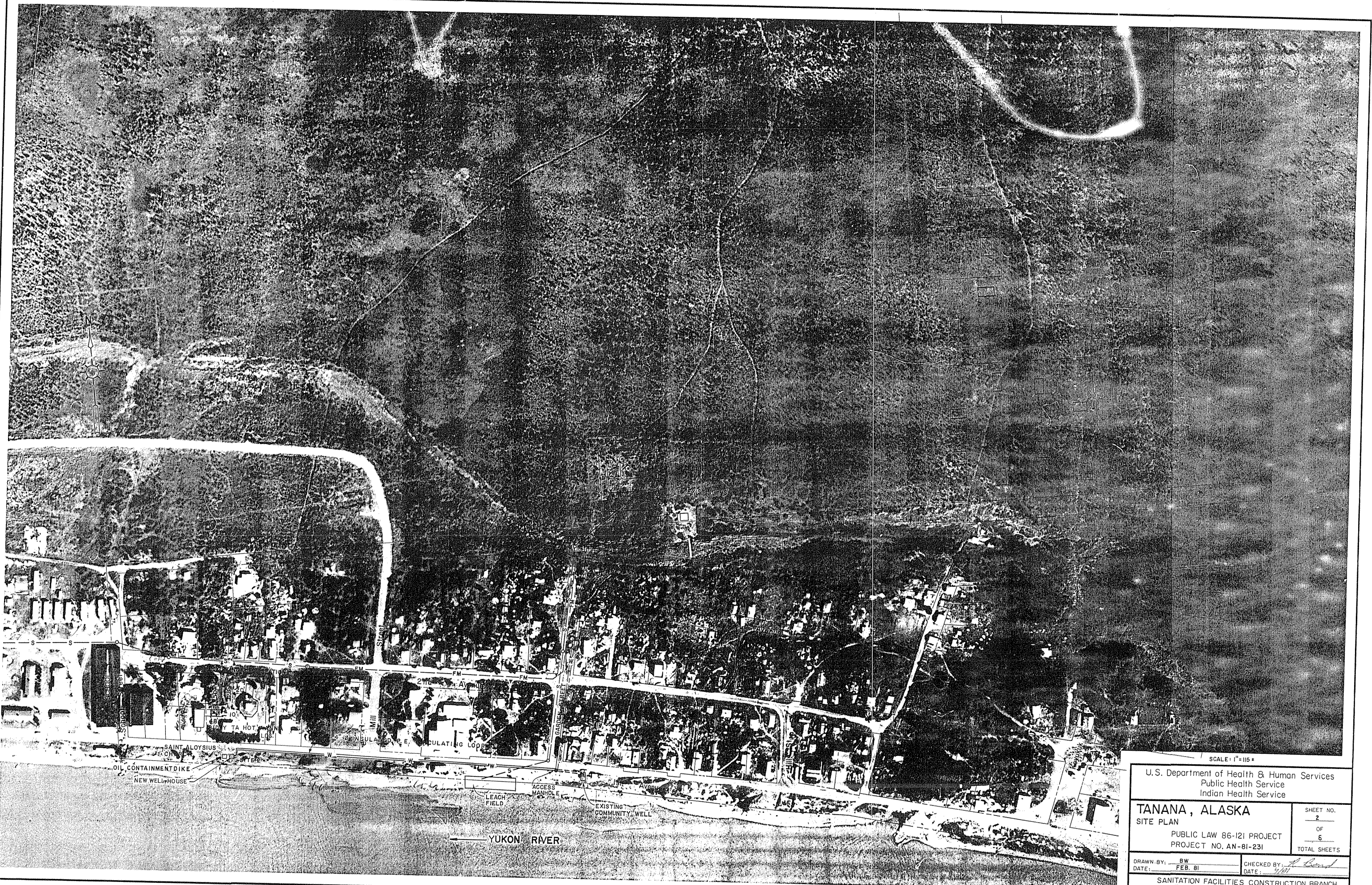
SHEET NO. \_\_\_\_\_  
OF \_\_\_\_\_  
TOTAL SHEETS \_\_\_\_\_

DRAWN BY: PCS  
DATE: 7/2/84

CHECKED BY: \_\_\_\_\_  
DATE: \_\_\_\_\_

SANITATION FACILITIES CONSTRUCTION BRANCH  
ENVIRONMENTAL HEALTH BRANCH  
ALASKA AREA NATIVE HEALTH SERVICE  
ANCHORAGE, ALASKA

Design Engineer \_\_\_\_\_  
Maintenance Review \_\_\_\_\_  
Material Take-off \_\_\_\_\_



SCALE: 1"=115'

U.S. Department of Health & Human Services  
Public Health Service  
Indian Health Service

**TANANA, ALASKA**

SITE PLAN

PUBLIC LAW 86-121 PROJECT  
PROJECT NO. AN-81-231

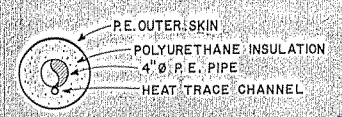
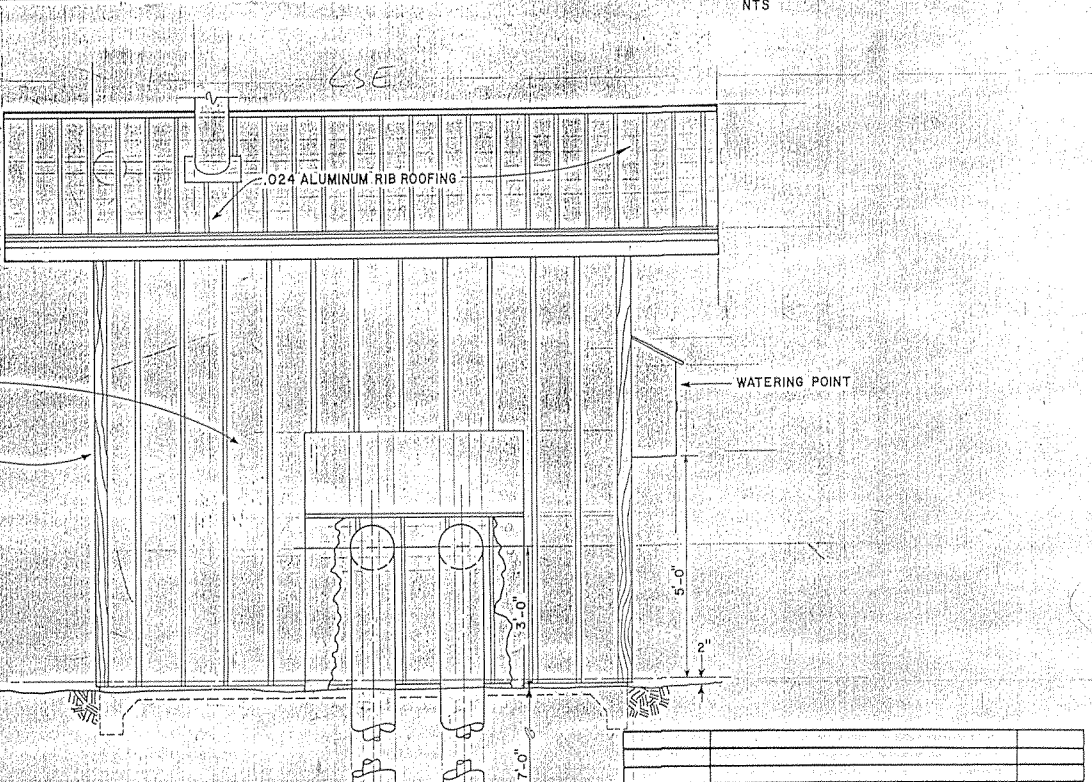
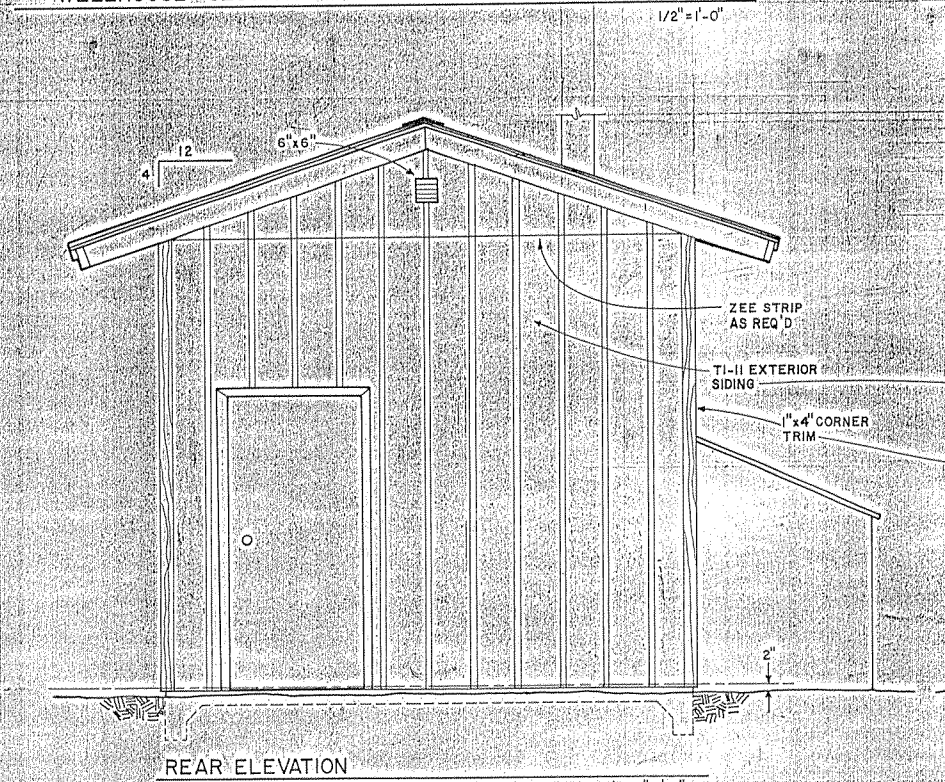
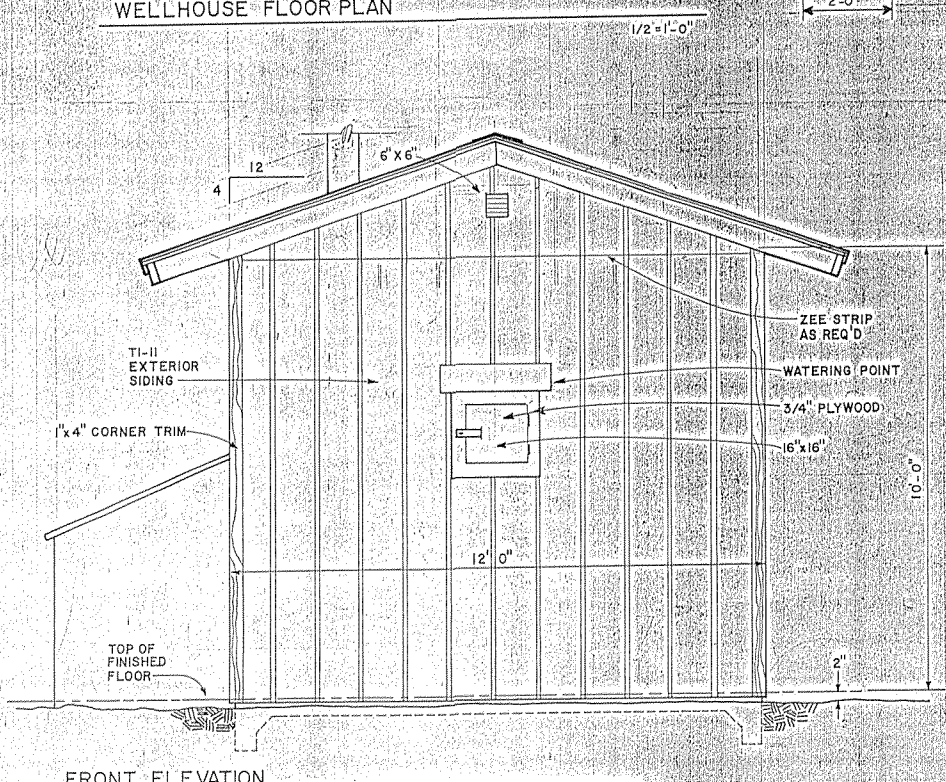
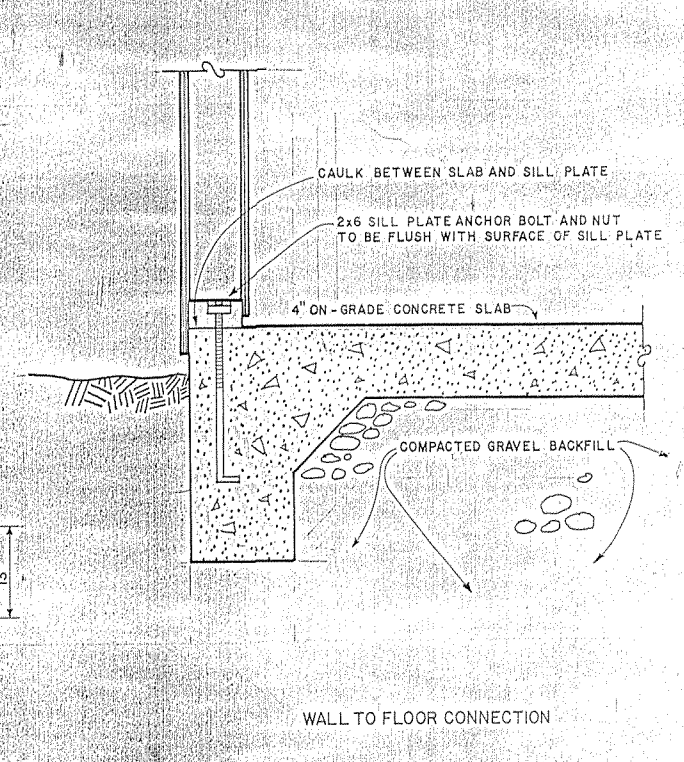
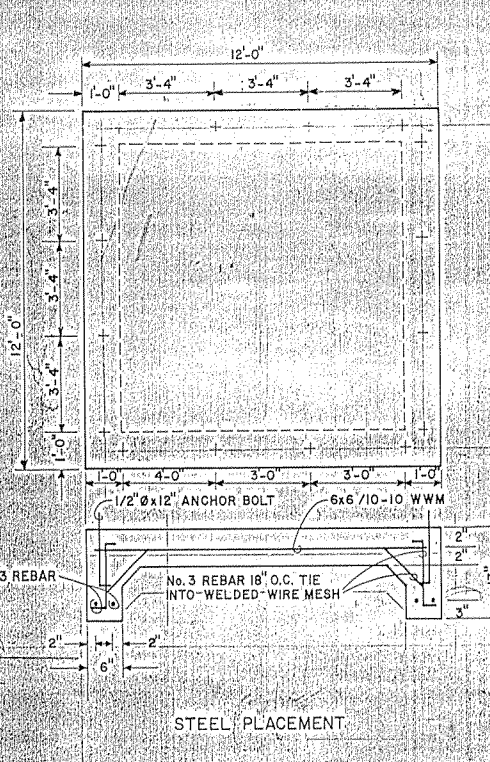
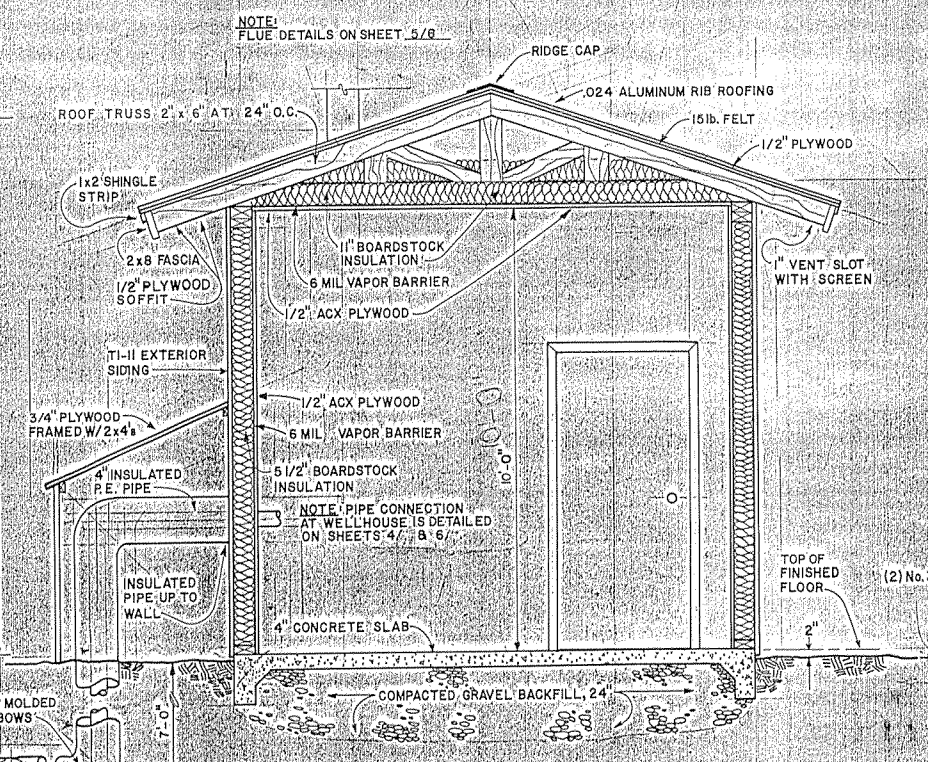
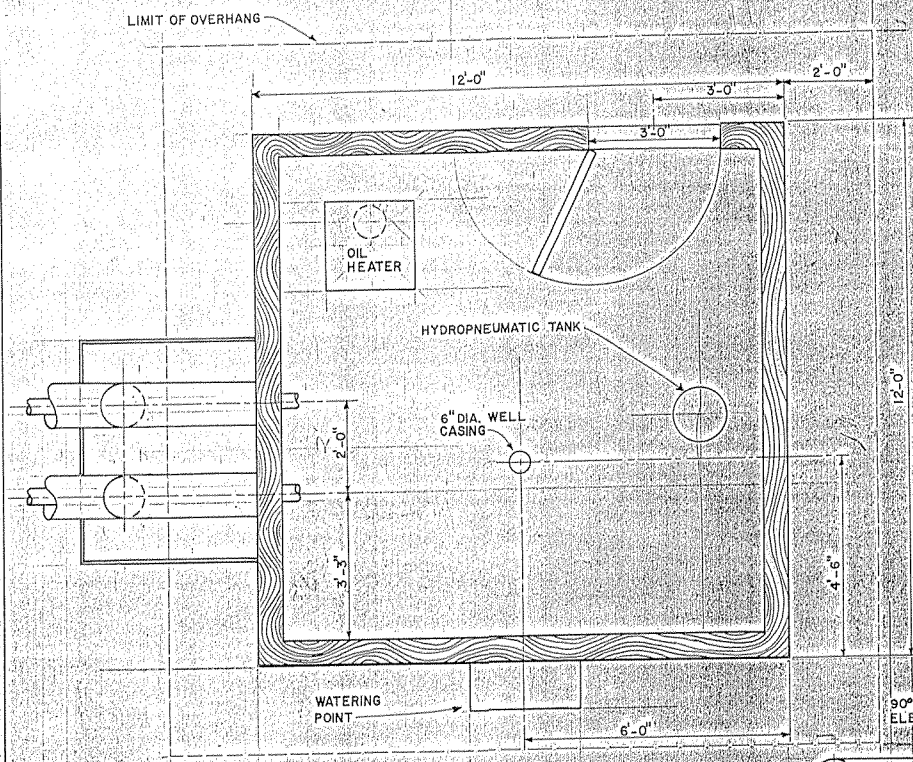
SHEET NO.  
2  
OF  
6  
TOTAL SHEETS

DRAWN BY: BW  
DATE: FEB. 81

CHECKED BY: A. Bond  
DATE: 4/81

SANITATION FACILITIES CONSTRUCTION BRANCH  
ENVIRONMENTAL HEALTH BRANCH  
ALASKA AREA NATIVE HEALTH SERVICE  
ANCHORAGE, ALASKA

Anchorage



NOTES: 1. THRUST BLOCKS TO BE USED AT ALL BENDS.  
 2. PIPE WILL HAVE HEAT TRACING FOR BACKUP FREEZE PROTECTION.

DATE	REVISIONS	INITIALS

U. S. Department of Health, & Human Services  
 Public Health Service  
 Indian Health Service

**TANANA, ALASKA**  
 WELLHOUSE ARCHITECTURAL

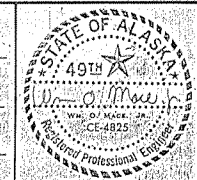
PUBLIC LAW 86-121 PROJECT  
 PROJECT NO. AN-81-231

SHEET NO. 3 OF 8 TOTAL SHEETS

**B. MACE**  
 Design Engineer

Maintenance Review

Material Take-off



DRAWN BY: BW  
 DATE: JAN. 81

CHECKED BY: *A. Board*  
 DATE: 7/81

SANITATION FACILITIES CONSTRUCTION BRANCH  
 ENVIRONMENTAL HEALTH BRANCH  
 ALASKA AREA NATIVE HEALTH SERVICE  
 ANCHORAGE, ALASKA