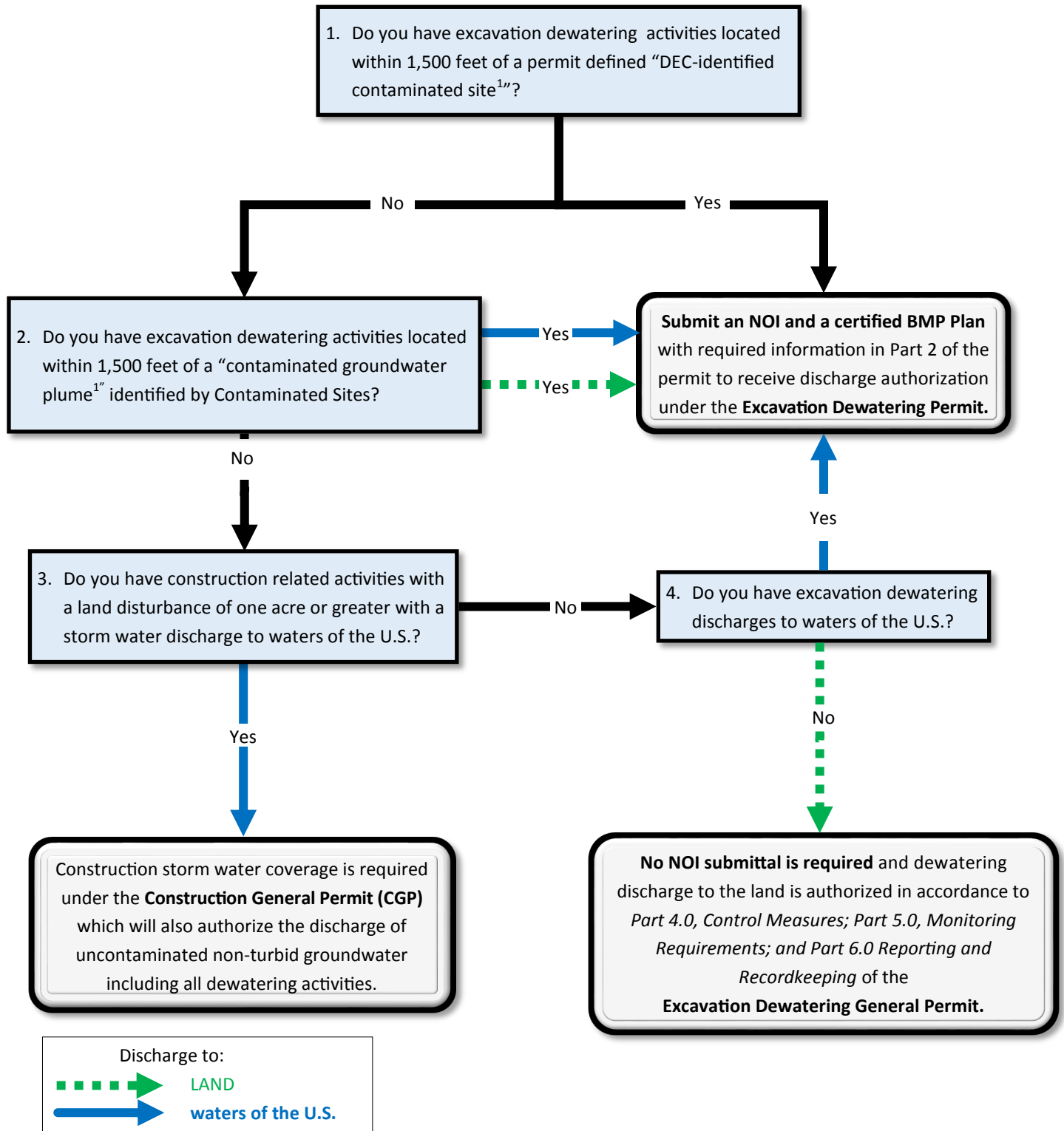


NOI SUBMITTAL REQUIREMENT FLOW CHART



1. A contaminated site or groundwater plume with an “Active” or “Cleanup Complete-Institutional Controls” status identified by DEC Contaminated Sites Program. For assistance in locating mapped contaminated sites or listing of groundwater plumes see <https://dec.alaska.gov/Applications/SPAR/PublicMVC/CSP/Search/>